

# FIRST DESTINATION REPORT

**AUG. 2019 - DEC. 2019 - MAY 2020**



## EUREKA COLLEGE 2019 - 2020

# Our Mission

The Office of Career Development's mission is to provide students and alumni of Eureka College with the best available resources to prepare for and find employment in today's world.

Students will prepare for their future careers through access to services such as career counseling, interest inventories, resume development, job-search assistance, career fairs, the annual Eureka College Career L.A.U.N.C.H. on-campus career conference, alumni mentoring, internship guidance, and more.

The Office also provides resources and information for students planning to further their studies in advanced degree programs at other colleges and universities. The Office of Career Development strives to help students take what they've learned and experienced at Eureka College, and apply it towards finding meaningful work as capable professionals.

**99%** *of EC grads are employed or continuing their education within 6 months of graduation.*

## Career Services Include:

- Selecting a major
- Resume and cover letter development and feedback
- Mock/practice interviews
- Informational interviews
- Exploring and defining career options
- Developing job search strategies
- Obtaining career-related experience
- Identifying and connecting with prospective employers
- Post-Graduate school research and application reviews
- Career Assessments



# TABLE OF CONTENTS

<b>4</b>	<b>EXECUTIVE SUMMARY</b>
<b>5</b>	<b>OUTCOMES</b>
<b>6</b>	<b>DETAILED OUTCOMES</b>
<b>7</b>	<b>DEPARTMENT OUTCOMES</b>
<b>8</b>	<b>EXPERIENTIAL LEARNING</b>
<b>9</b>	<b>EXPERIENTIAL LEARNING GALLERY</b>
<b>10</b>	<b>CAREER DEVELOPMENT ACTIVITY GALLERY</b>
<b>11-12</b>	<b>STUDENT EXPERIENCE</b>
<b>13-14</b>	<b>GRADUATE SCHOOLS, INTERNSHIPS, &amp; EMPLOYERS</b>



# Executive Summary

The First Destination Study/Outcome Survey is prepared annually by the Office of Career Development to summarize the post-graduation outcomes of Eureka College graduates. This report includes data from undergraduates earning degrees from the graduating classes between July 1, 2019 and June 30, 2020 (August 2019, December 2019, and May 2020). The standards utilized to define the graduation class are consistent with the definition used by the U.S. Department of Education in gathering education statistics for its IPEDS database. This year's survey continues to follow questions designed and developed by the National Association of Colleges and Employers (NACE) standards and protocols.

The term "knowledge rate" defines the percent of graduates for which we have reasonable and verifiable information concerning the graduates' post-graduation career paths. Data was collected via graduation surveys, online surveys, telephone and email solicitations, alumni records, social media research, and input from faculty, staff, employers, friends, and family. The knowledge rate allows for multiple sources of data, not just survey responses.

The term "career outcome rate" is the percentage of graduates who are engaged in a career outcome. This percentage is calculated by dividing the number of students who are employed (full or part-time), continuing their education, or engaged in volunteer service or military service by the total number of students for which we have reasonable and verifiable information.

The Office of Career Development would like to express sincere appreciation to Lucy Carley, Career Development student worker, who helped collect, compile, and organize this information.

**Kelly Bay**

Director of Career Development

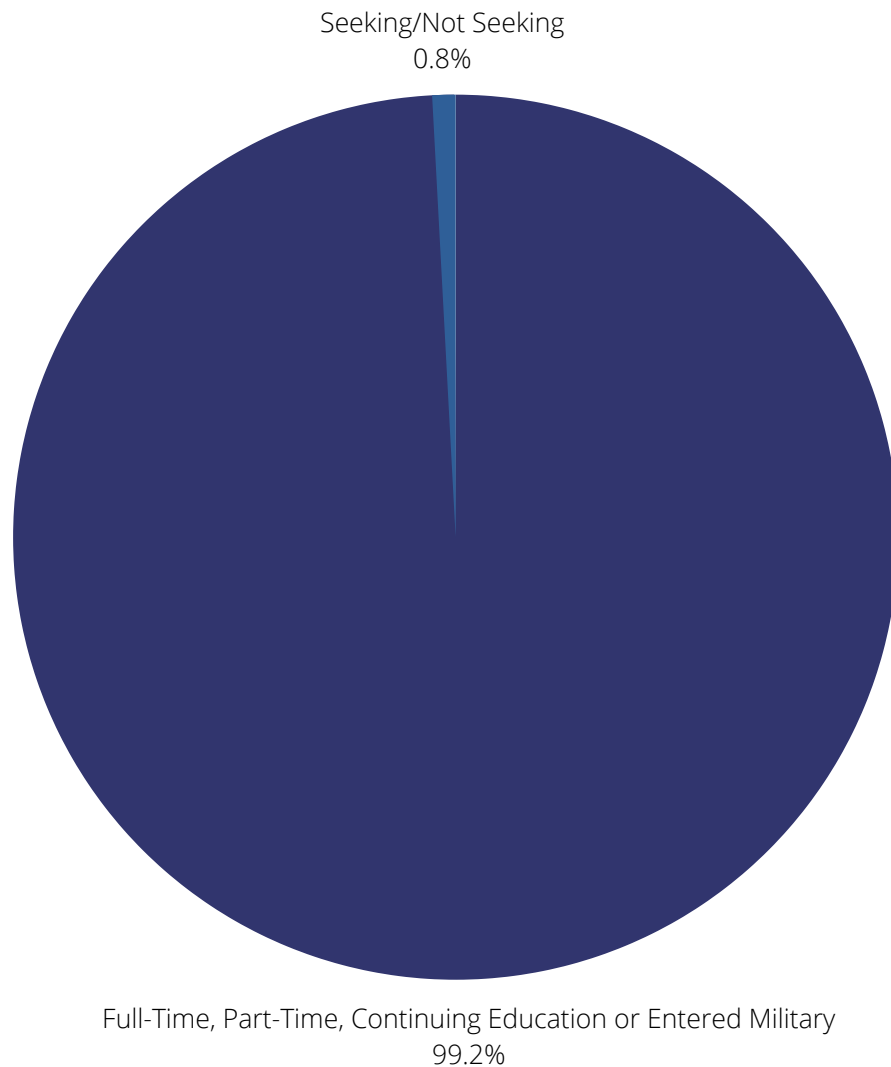




# First Destination Study

**August 2019 - December 2019 - May 2020**

**99% Positive Career Outcome!**



**98% Knowledge Rate**

**121 Number of graduates from August 2019, December 2019, & May 2020**

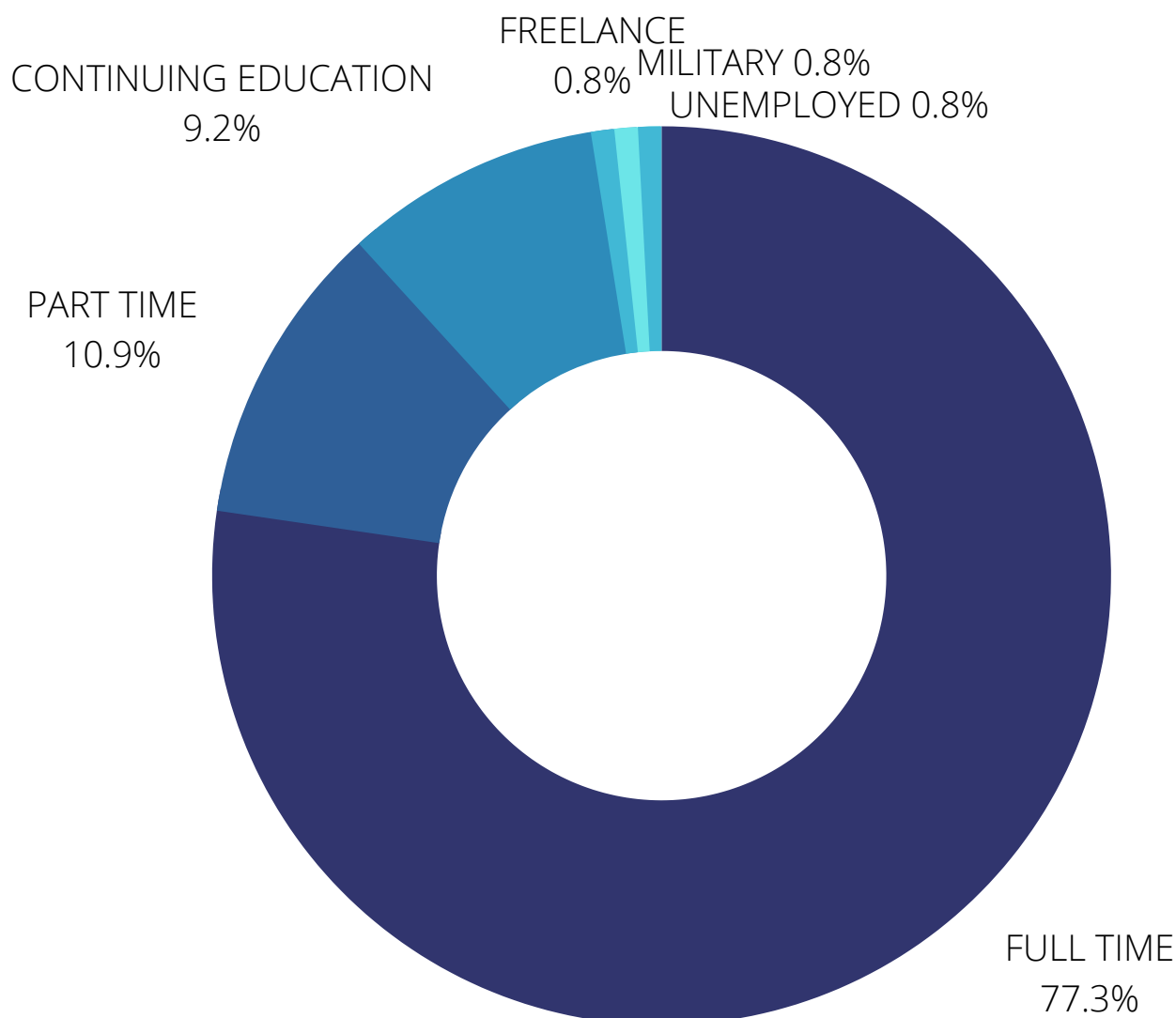
**119 Number of graduates with verifiable data**

**1 Number of those graduates seeking or not-seeking employment**

*Percentage is rounded to the nearest whole number. "Positive Career outcome" is defined using NACE guidelines.  
Exact percentages are 99.27% positive outcome and 0.8% knowledge rate.*

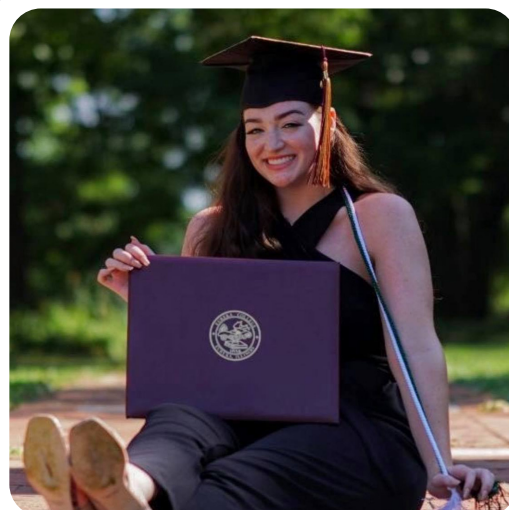
# First Destination Study

## Detailed Outcomes



### By the numbers

- 92 graduates are employed full-time
- 13 graduates are employed part-time
- 11 graduates are continuing their education
- 1 graduate is conducting freelance work
- 1 graduate entered the military
- 1 graduate is unemployed



# OUTCOME BY DEPARTMENT

OVERALL	EDUCATION	BY MAJOR
100%	<i>Elementary Education (w/ &amp; w/o license)</i>	100%
	<i>Education (Middle Grades)</i>	100%
	<i>Special Education (w/ &amp; w/o license)</i>	100%
	<i>Mathematics (Secondary Education)</i>	100%
	<i>Social Science (Secondary Education)</i>	100%
	<i>English (Secondary Education)</i>	100%
	<i>Music (w/ teacher license)</i>	100%

OVERALL	HUMANITIES	BY MAJOR
100%	<i>Communication</i>	100%
	<i>English/Literature</i>	100%
	<i>English/Writing</i>	100%
	<i>Philosophy &amp; Religion</i>	100%
	<i>Hispanic Studies</i>	100%
	<i>Spanish Language &amp; Culture</i>	100%

OVERALL	SOCIAL SCIENCE & BUSINESS BY MAJOR	
99%	Accounting	100%
	Business Administration	100%
	Child Life Specialist	100%
	Criminal Justice/Sociology	93%
	History & Political Science	100%
	Organizational Leadership	100%
	Psychology	100%
	Sociology & Psychology	100%
	Sports Management	100%

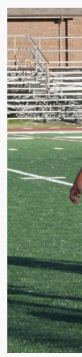
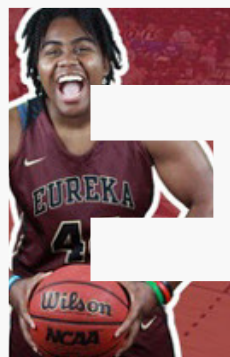
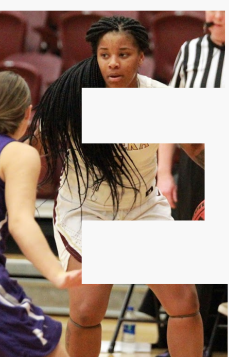
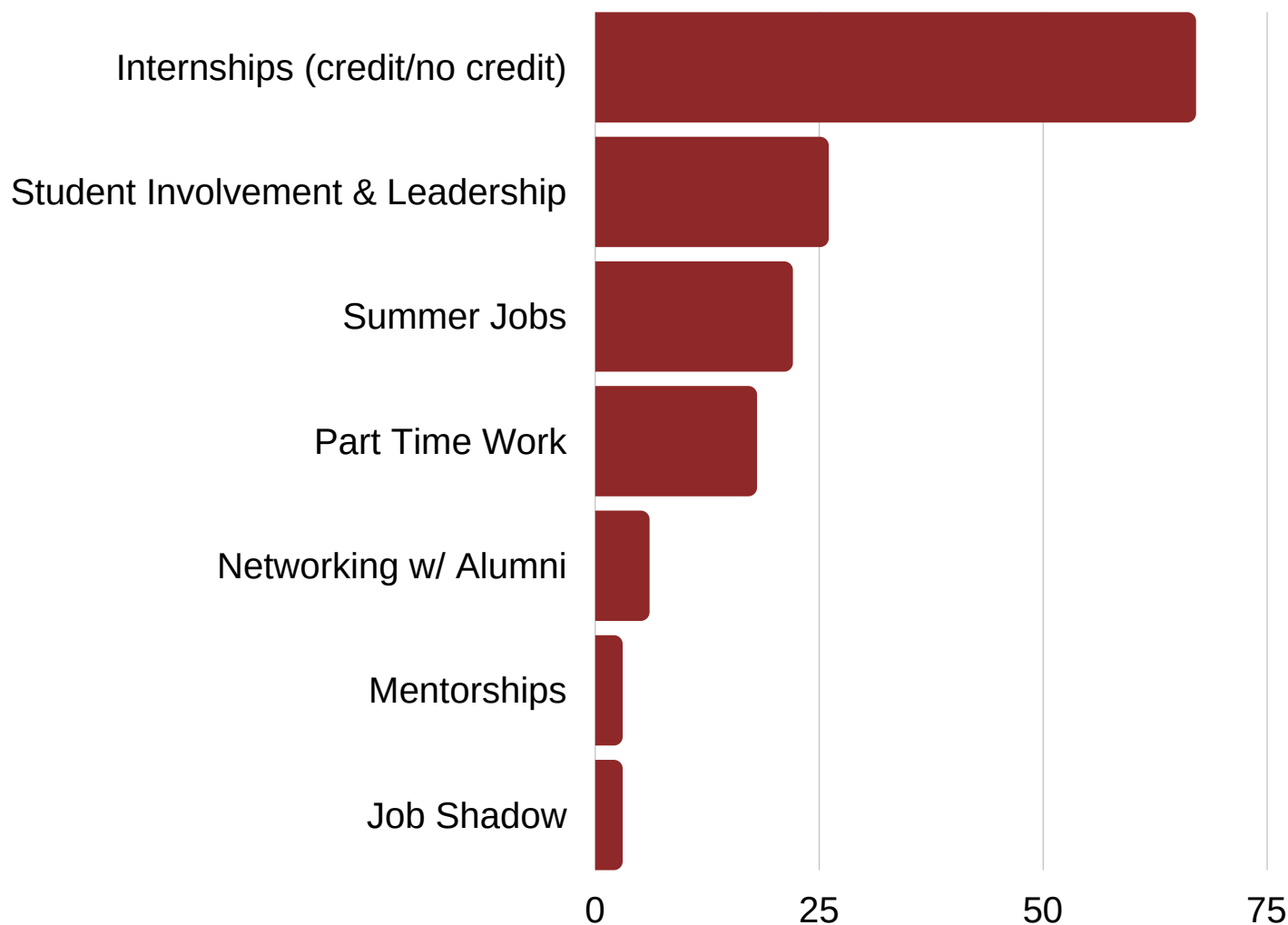
OVERALL	<u>SCIENCE &amp; MATHEMATICS</u>	BY MAJOR
100%	<i>Biology</i>	100%
	<i>Chemistry</i>	100%
	<i>Kinesiology/Exercise Science</i>	100%
	<i>Kinesiology/Athletic Training</i>	100%
	<i>Mathematics</i>	100%
	<i>Environmental Studies</i>	100%
	<i>Environmental Science</i>	100%

OVERALL	<u>FINE &amp; PERFORMING ARTS</u>	BY MAJOR
100%	<i>Art</i>	100%
	<i>Music</i>	100%
	<i>Theatre Arts</i>	100%
	<i>Digital &amp; Media Design</i>	100%



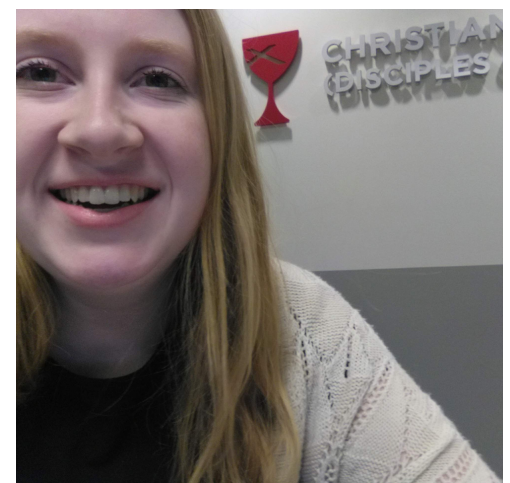
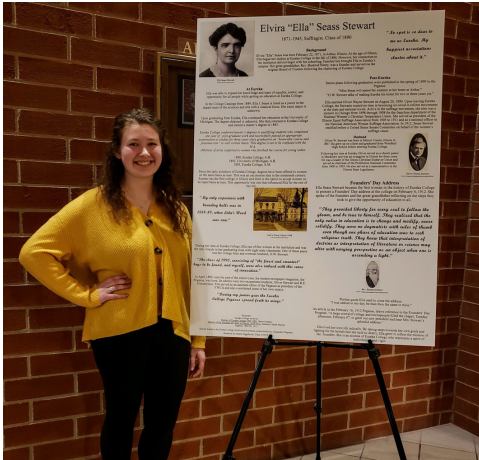
# Experiential Learning

## Graduate Self-Reported Study Results & Internship Agreements (Summer 2019, Fall 2019, & Spring 2020)





Eureka graduates were engaged in a multitude of extra-curricular activities, often including leadership roles, and a variety of experiential learning opportunities which extended their learning beyond the classroom. Experiences such as internships, study abroad, independent studies, research projects, part-time jobs, alumni networking, collegiate sports, etc. provide Eureka students transferable skills which enhance their marketability as they enter the workforce in today's competitive labor market.





**Every year The Office of Career Development offers activities for students such as networking events, presentations, mock interviews, access to career fairs, collaborative events with clubs/orgs, and more. In 2019, the inaugural Eureka College Career L.A.U.N.C.H. (Leaders & Alumni Unite to Navigate Career Help) conference was held. It included speakers, panel discussions, breakout sessions, & networking events, providing advice from 23 alumni and friends of the college.**



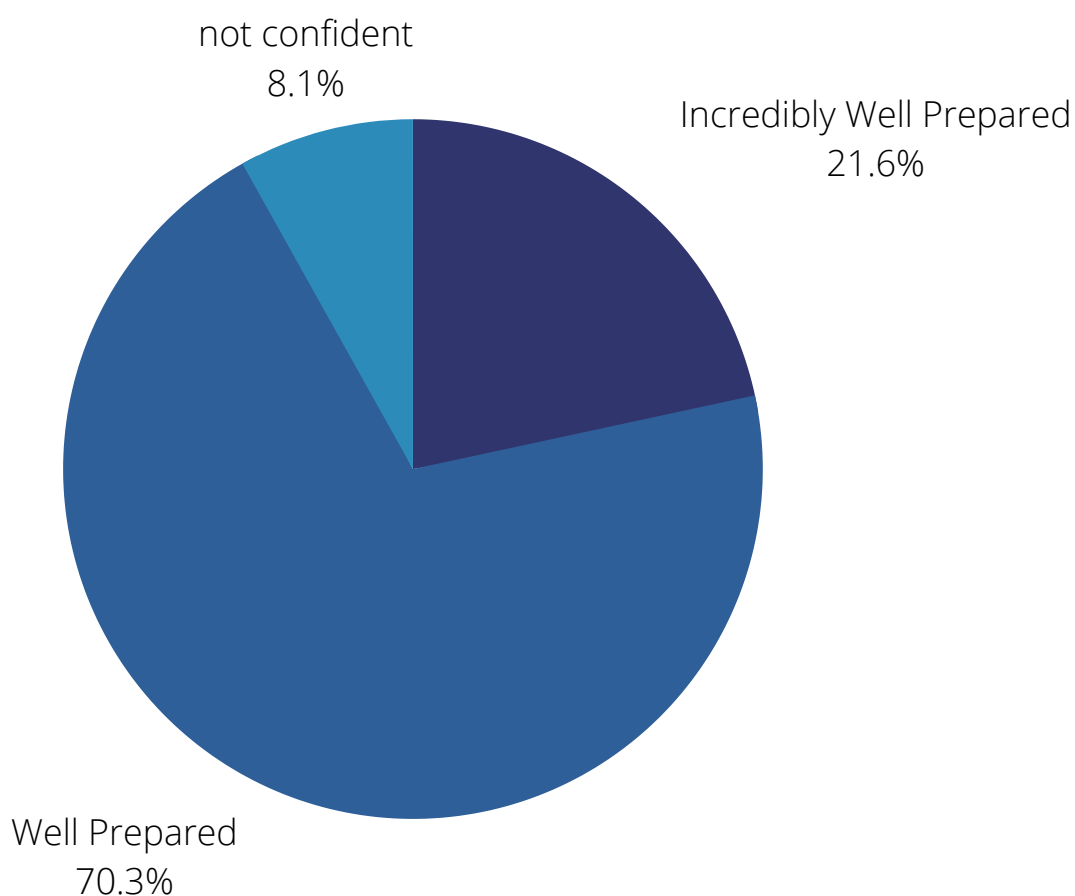
Photo Credit: Lizzie Rassi



# "How Well Did Eureka College Prepare You?"

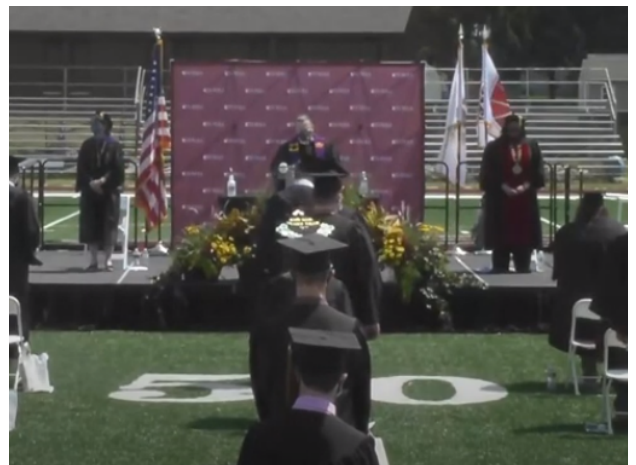
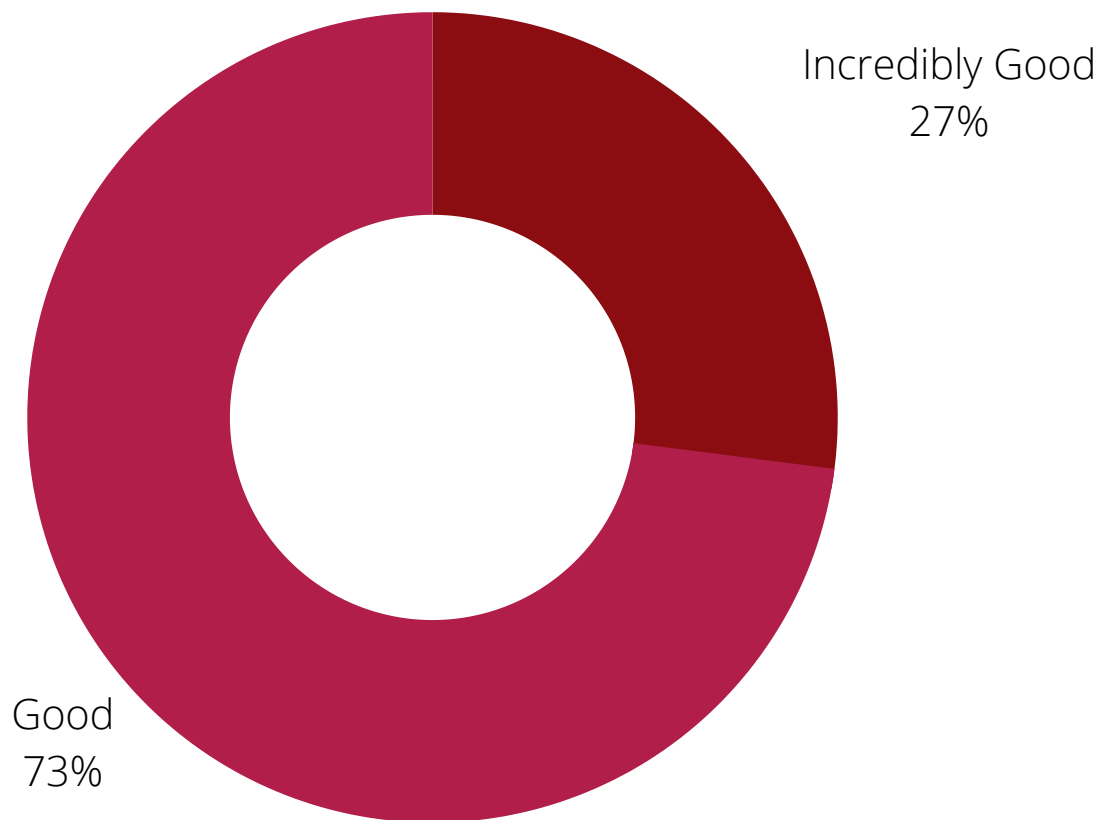
# 92%

## of graduates feel prepared for future success!

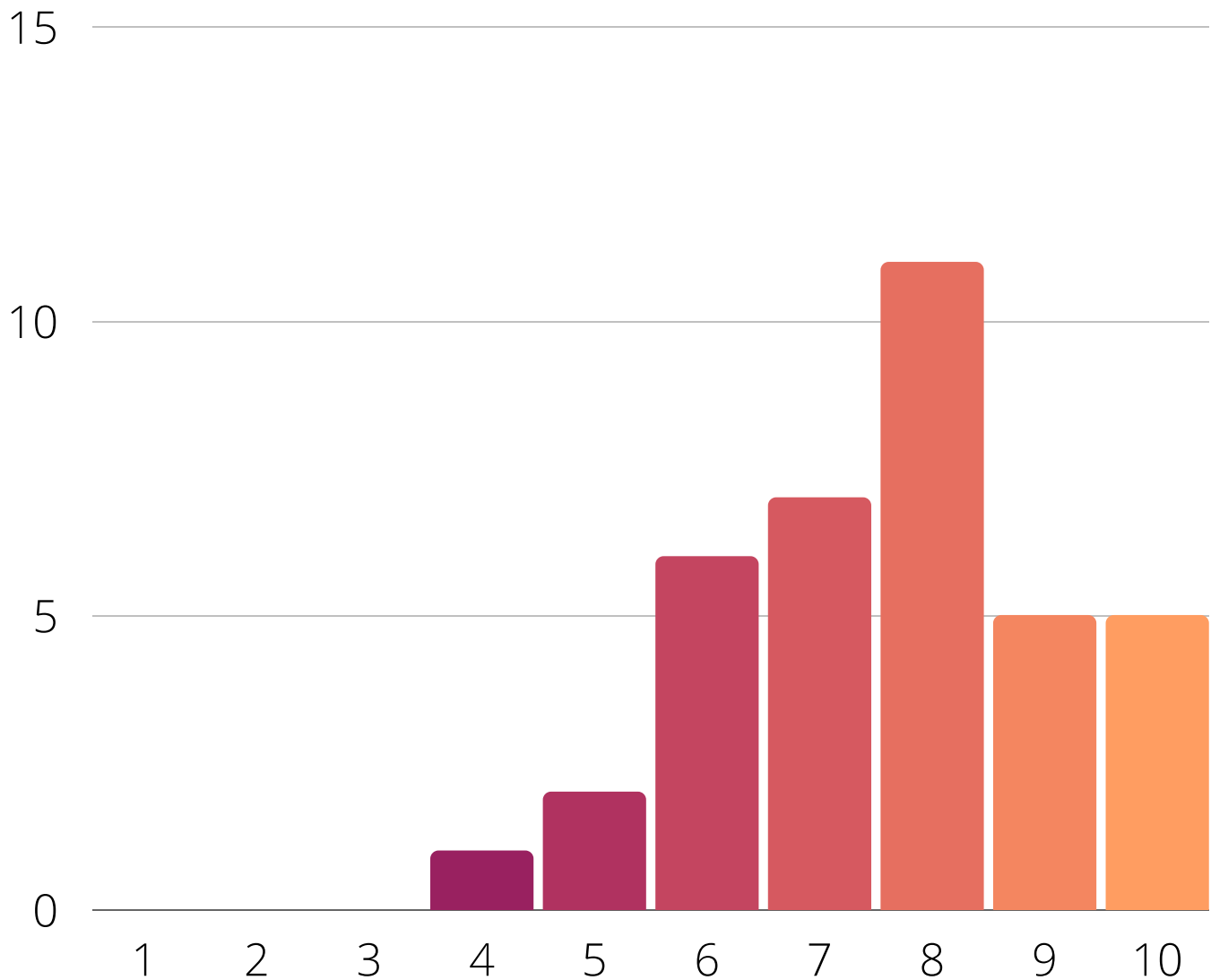


## "Was Your Eureka Education a Good Value?"

**97%** *say YES!*



"How satisfied are you with your EC education?"



**92%** of graduates are Satisfied or Extremely Satisfied



## Graduate & Professional Schools

- *Illinois State University*
- *University of South Florida*
- *Benedictine University*
- *Washington University School of Law*
- *Roosevelt University*
- *American University of the Caribbean School of Medicine*
- *University of Illinois - Springfield*
- *Illinois Central College*

## Internships

- *360 Performance*
- *Bix Basement Systems*
- *Caterpillar Inc.*
- *Children's Home Association of Illinois*
- *Chillicothe Veterinary Clinic*
- *Craig Spine and Sport*
- *Decatur Memorial Hospital*
- *Down River Farm*
- *Eastside Educational Center*
- *Elkhart Grain*
- *ELM (Eureka Literary Magazine)*
- *Encore Medial Group of Orlando*
- *Eureka College Alumni & Development*
- *Eureka College Archives*
- *Eureka College Athletic Department*
- *Eureka College Melick Library*
- *Eureka College Office of Career Development*
- *Eureka College Office of Student Life*
- *Eureka College Office of the President*
- *Eureka College Ronald Reagan Museum*
- *Eureka Public Library*
- *Henry Brockman's Farm*
- *Kicks Fitness*
- *Mackinaw Christian Church*
- *McLean County Sheriff's Department*
- *Metamora Township High School*
- *Morton Crime Lab*
- *Motorola Innovation Center*
- *Peoria Christian High School*
- *Peoria Civic Center*
- *Peoria Riverfront Museum*
- *Peoria Rivermen*
- *State Farm*
- *StraightUp Solar*
- *Tazewell County Sheriff's Dept.*
- *The Immigration Project*
- *Toyota Park*
- *U.S. Department of Justice*
- *Urban Acres*
- *Walt Disney World*
- *Washington Police Department*
- *WDW News Today*
- *Woodford County Court House*
- *Woodford County Sheriff's Dept.*
- *Youth Farm Bradley University*

## Employers

- Aerotek
- American Football International
- Amazon
- Avanti's Ristoranti
- Barton Creek Elementary School
- Bethany University
- Bloomington Art Center
- CUSD 140
- Calvin Coolidge Middle School
- Camp of Champions USA
- Carle BroMenn Medical Center
- Caterpillar
- Central Intermediate School
- Cheeca Lodge & Spa
- Children's Home Association
- Connections Academy
- Country Financial
- Courtyard by Marriott
- Cracker Barrel
- CVS Pharmacy
- Dairy Queen
- Davenport Elementary
- Dr McKay's Bar & Grille
- Dream a Bit Homes
- Eureka College
- FIBA Sports Association
- Fort Wayne Community Schools
- Franciscan Health
- Gresham Partners, LLC
- GQT Willow Knolls 14
- Fort Wayne Community School
- Hattie B Stokes Elementary
- Heyworth Jr-Sr High School
- Hometown Community Banks
- Hometown National Bank
- Hyvee
- Illini Bluffs High School
- Illinois Central College
- Independence Village
- Integrated Facility Services
- James Unland & Co.
- Jacksonville Police Department
- Judith Giacomini Elementary School
- Jersey Flight Football Team
- Kewanee High School
- Kleen Cut Services LLC
- Kuopio Steelers Football
- Livingston County Jail
- LNF Rosewood Timber
- Lou Malnati's
- McDonalds
- Mediacom
- Memorial Medical Center
- Mendota Schools
- Metamora Fields
- Midland High School
- Midwest AV Group
- Monical's Pizza
- Montana Conservation Corps
- Once 'n Again
- Our Lady of Lourdes Parish
- OSF Saint Francis Medical Center
- Pierce Manufacturing
- Pekin Insurance
- Peterson Health
- Quest Charter Academy
- Raymond James
- Saint George Elementary School
- Sam Leman Chrysler Jeep Dodge Ram
- Seico Security
- Sharon Healthcare Pines
- Social Security Administration
- Speciality Risk of America
- Spectrum Health
- Spoon River Community College
- State Farm
- State Senator Meg Loughran Cappel
- Teneco Automotive
- Teegarden Veterinarian Clinic
- Tanner's Orchard
- The Blend
- The Place for Children with Autism
- Total Spectrum
- United States Air Force
- US Marble and Granite
- Wake Forest Baptist Health
- Walmart
- Washington IL Police Department
- Westpoint Financial Group
- Woodford County

# **First Destination Study**

## **2019 - 2020**

